

Ricoh HQ9000 Priport  
Multifunctional Systems  
Productivity you can count on

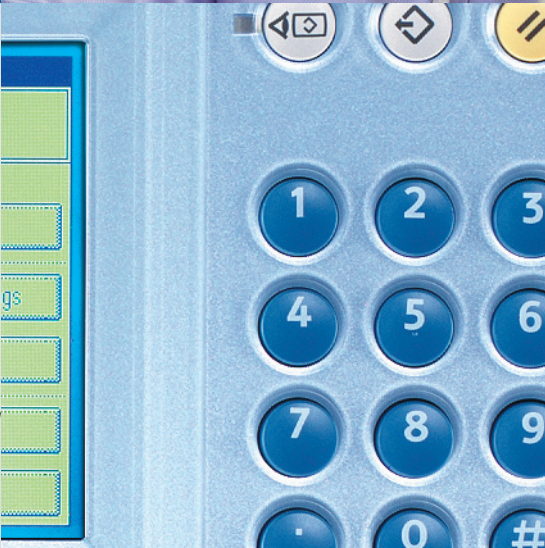
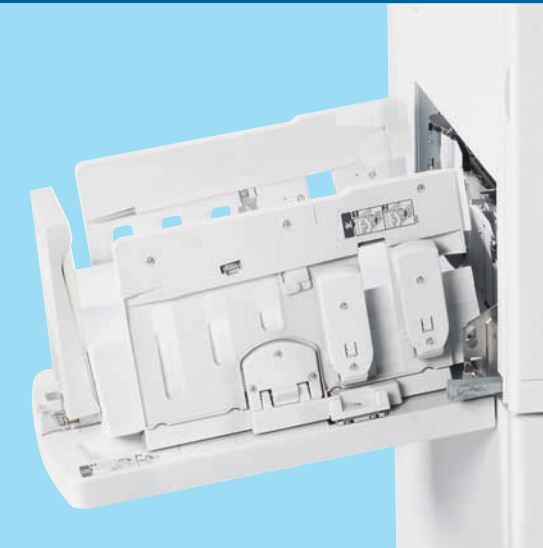
**RICOH**



economy



productivity



reliable

# Ricoh HQ9000 Priport

**An economical, reliable solution to production printing**  
When you need a large number of prints fast, there's nothing that can match the speed, reliability and cost-effectiveness of a digital duplicator. And the Ricoh HQ9000 Priport is the best in class: a productive, durable, easy-to-operate system that can output prints at a fraction of a penny each. All at a quality that is amazingly close to high-end copying and with spot color.



# FastEconomicalReliable

## Printing doesn't get much faster

With speeds as high as 135 prints per minute for 8-1/2" x 11" sheets and a remarkable 120 prints per minute for 11" x 17", the Ricoh HQ9000 Priport sets new standards for productivity. And if you add the optional automatic document feeder, productivity is boosted even further.

## The cost-effective solution

Managing costs is a major goal at any organization. The Ricoh HQ9000 Digital Duplicator is the low-cost solution to your high-volume printing needs:

- It uses less ink.
- Because there's no heating element, power consumption is a fraction (as little as 4%) of the cost of a high-speed copier.
- Power consumption is also held down through a series of cost-saving technologies, including auto shut-off mode that switches power off during pauses, energy-saver mode that cuts power 85% during printing lulls, and economy mode.

## Keeps going and going and...

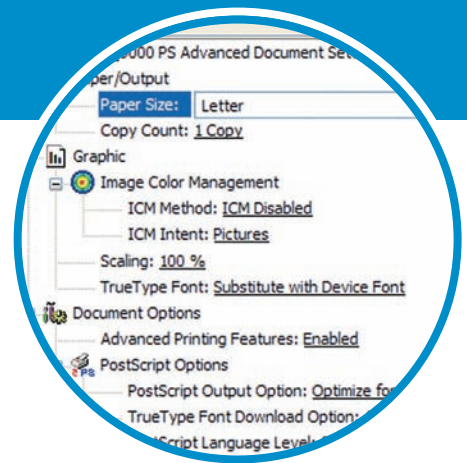
The Ricoh HQ9000 Priport captures the advantages of offset printing—few moving parts—without the huge investment:

- Extended duty cycle (up to 600,000 pages monthly and 15 million lifetime) approaches offset press durability.
- It's highly reliable architecture ensures maximum intervals between maintenance calls.
- Double-feed sensor automatically alerts operator if multiple sheets are pulled into the machine, minimizing misfeeds and missing pages.

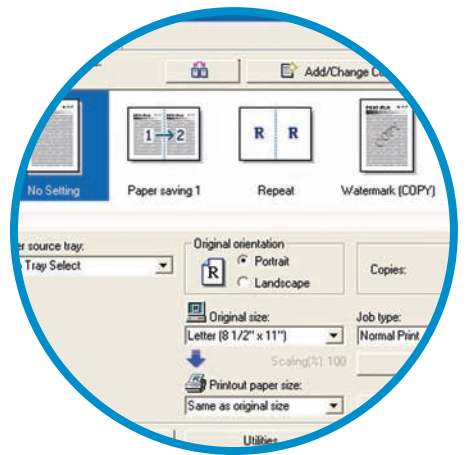
## Copier simplicity

The Ricoh HQ9000 Priport has the same basic operating panel as a copier, which everyone in your organization is already familiar with:

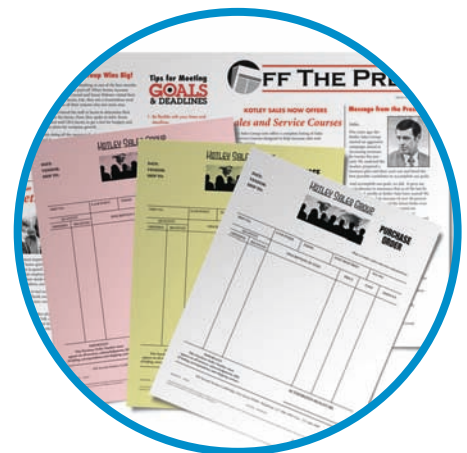
- Large, interactive touch screen greatly simplifies system operation—even for walkup users.
- Intuitive prompts, graphics and LED indicators keep operators informed about system status.



The Ricoh HQ9000 Priport connects easily with any standalone computer or networked operating system with the Optional PostScript® 3 interface.



Ricoh's Refined Print Command Stream (RPCS) simplifies printing and set-up with its icon-based page description language.



The Ricoh HQ9000 Priport can handle a wide array of paper stock, including 11" x 17" stock, 8.5" x 11" letter-head, envelopes, NCR forms, card stock and 25% cotton bond.

# Simple operation **Quality imaging**

## High quality output

The Ricoh HQ9000 Priport, with its “High Quality Imaging System,” will change your perception about the quality of digital duplicator output. The quality is so good, in fact, that even halftones compare favorably to those produced by a copier.

- Roller marks and stains are dramatically reduced and set-off is eliminated through the superior, fast-dry “HQ ink” chemistry.
- Edges on body copy and headlines are razor sharp and clean because of a new master imaging technique that percolates ink ultra-evenly onto every page.
- Registration for two-color jobs is consistently dead on because of Ricoh’s exclusive dual cylinder technology and highly accurate paper clamping system.
- True 600 x 600 dpi image quality is attained by harnessing virtually the same image processing technology as Ricoh copiers.

## Media flexibility, security and more

Finally, the Ricoh HQ9000 Priport is much more than print productivity and economy. Its advanced performance extends through remarkable media flexibility, security features and connectivity options.

- The Ricoh HQ9000 Priport can easily handle everything from 4" x 6" postcards to 11" x 17" newsletter stock—as well as envelopes, vellum and NCR—in weights from 12.5 Bond to 110 lb. index.
- Web Image Monitor, SmartDeviceMonitor and DeskTop Binder utilities help make everyday systems management easy and fast right from your desktop.



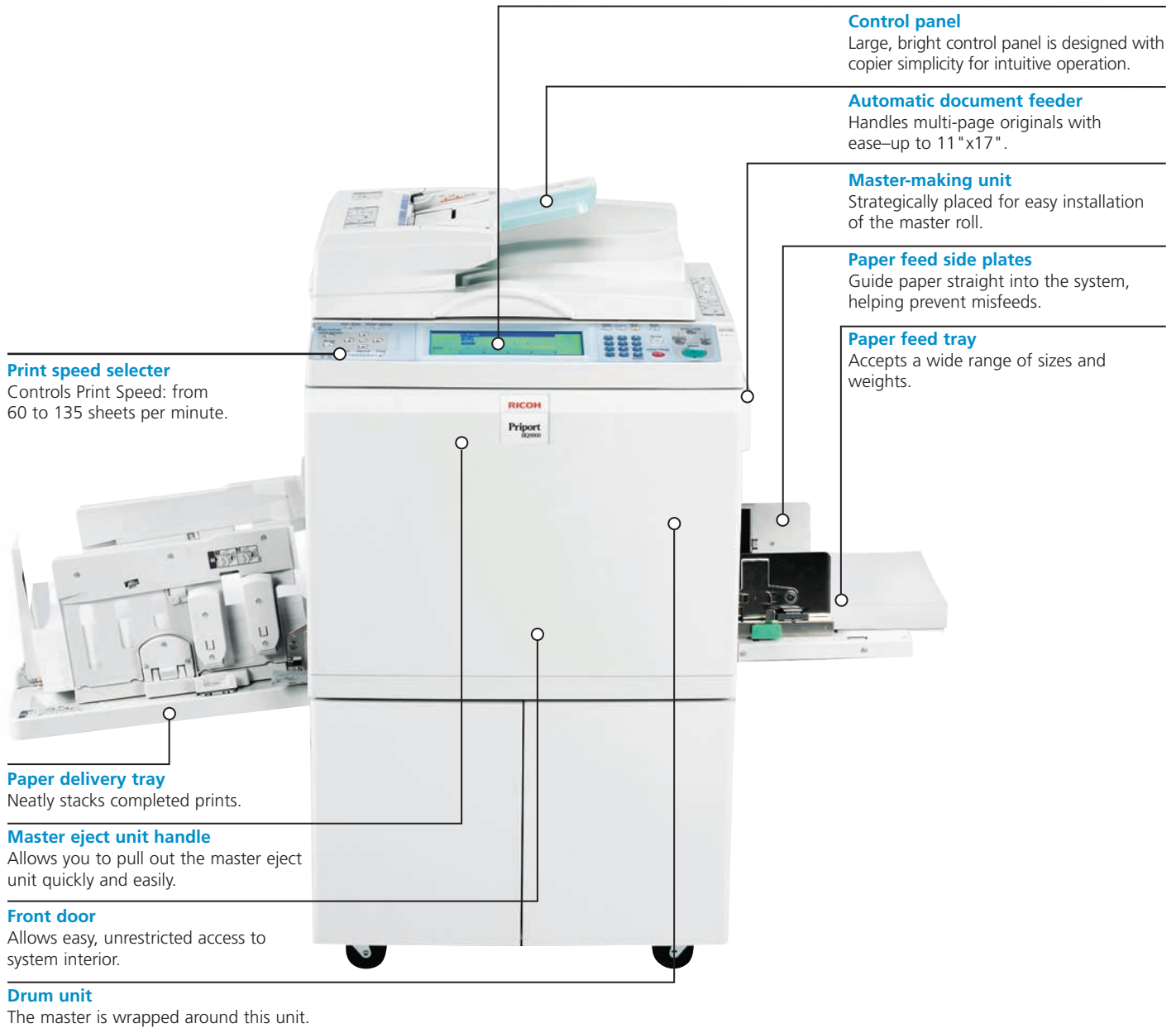
## Protecting our shared environment.



The Ricoh HQ9000 Priport meets our longstanding commitment to engineering office solutions with superior energy and supply-saving features, including:

- Instant Start Up (no warm up) technology
- Power-saving Sleep Modes
- Zero Ozone Emissions

# Productive Simplified Economical



## Accessories

### LS3000R



Print large jobs virtually non-stop with the LS3000R Large Capacity System, which holds up to 3,000 sheets.

### SeriPrinter Model 25



Dramatically improve your print performance with the SeriPrinter Model 25, which instantaneously dries printed pieces and eliminates the wait between color passes.

### TC-IIR



Save time and cut costs on multi-color jobs by printing two colors in one pass with the TC-IIR Digital Production Printer.

# Ricoh HQ9000 Priport

## Specifications



A new, large LCD touch-screen makes it easy to step up and perform operations.

<b>Configuration</b>	Desktop	<b>Auto Document Feeder</b>	Yes (opt. 50-sheet)	<b>Controller</b>	Embedded, Standard
<b>Printing Process</b>	Digital Ink, Dual Cylinder System	<b>Image Modes</b>	Letter, Photo, Letter/Photo Auto Separation, Tint, Pencil 4R/3E; directional; zoom	<b>Color Drum Cabinet</b>	Optional
<b>Power Source</b>	120V, 60Hz	<b>Reduce/Enlarge Ratio</b>	4R/3E; directional; zoom	<b>Platen Cover</b>	Optional
<b>Dimensions (W x D x H)</b>	55.9" x 27.8" x 40.2" (with Platen Cover)	<b>Image Position (Horizontal/Vertical)</b>	H: + 15mm (by 0.25mm) V: + 10mm (by 0.25mm)	<b>Network Interface</b>	USB2.0; Ethernet Std; Parallel, IEEE802.11b Wireless opt.
<b>Max. Monthly Volume</b>	600,000 prints	<b>Interactive Touch-Screen Masters</b>	Yes	<b>PostScript 3</b>	Yes (opt. module)
<b>PM Interval</b>	1,200,000 prints (or 12 months)	<b>Master Run Length</b>	255 L-size sheets per roll	<b>PERIPHERAL</b>	
<b>Print</b>	Single color one pass	<b>Master Feed Capacity (A3)</b>	4,000	<b>Large Capacity System</b>	Yes (optional LS3000R)
<b>Print Speed</b>	60 – 135 sheets / min. (6 steps)	<b>Eject Master Box (A3)</b>	200 masters	<b>Twin Color</b>	Yes (optional TC-IIR)
<b>Resolution</b>	600 x 600 dpi	<b>Paper Clamper</b>	Approx. 100 masters	<b>SeriPrinter Model 25</b>	Yes (optional)
<b>First-Print Time (A4)</b>	19 seconds	<b>Job Separation</b>	Yes	<b>VDPH1</b>	Yes (optional)
<b>Paper Feed Capacity (20 lb.)</b>	1,000 sheets std; 3,000 sheets opt.	<b>Security Mode</b>	Drum lock; ejected master box lock		
<b>Paper Delivery Capacity</b>	1,000 sheets std; 3,000 sheets opt.	<b>Program Mode</b>	Yes (9 programs)		
<b>Paper Size</b>	2.8" x 5.8" to 12.8" x 17.6"	<b>Auto Shut-Off</b>	Yes		
<b>Print Area (max.)</b>	11.4" x 16.6"	<b>Skip Feed</b>	Yes		
<b>Original Size</b>	Platen 4.1" x 5.0" to 11.8" x 17.0"	<b>Auto Density Control</b>	Yes		
<b>Original Type</b>	Book, Sheet	<b>Print Density Control</b>	Yes (2 levels)		
		<b>Image Storing</b>	Yes (via opt. HDD)		
		<b>Stamping</b>	Yes (via opt. HDD)		
		<b>Auto Color Drum Detection</b>	Yes		
		<b>Special Features</b>	User Codes (200); Image Combine (2 in 1, 4 in 1, custom); Repeat Print (2/4/8/16 in 1); Overlay; Double-feed Detection; Quality Start		

# RICOH

Ricoh Corporation Five Dedrick Place, West Caldwell, NJ 07006  
 Ricoh® is a registered trademark of Ricoh Corporation. Windows® and Windows® 95/98/Me/NT4.0/2000/XP are registered trademarks of Microsoft Corporation. Macintosh®, Mac® OS and AppleTalk® are registered trademarks of Apple Computer, Inc. Adobe® and PostScript® are registered trademarks of Adobe Systems, Inc. RPCS™ is a trademark of Ricoh Company, Ltd. All other trademarks are the property of their respective owners. Printed in U.S.A. on recycled paper. Print speed may be affected by network, application or PC performance. Specifications and external appearances are subject to change without notice. Products are shown with optional features. CA-0496

