

Ricoh 2016/2020/2020D Series
Digital Imaging Systems
Connect Your Office and Work Smarter

RICOH



connected



versatile



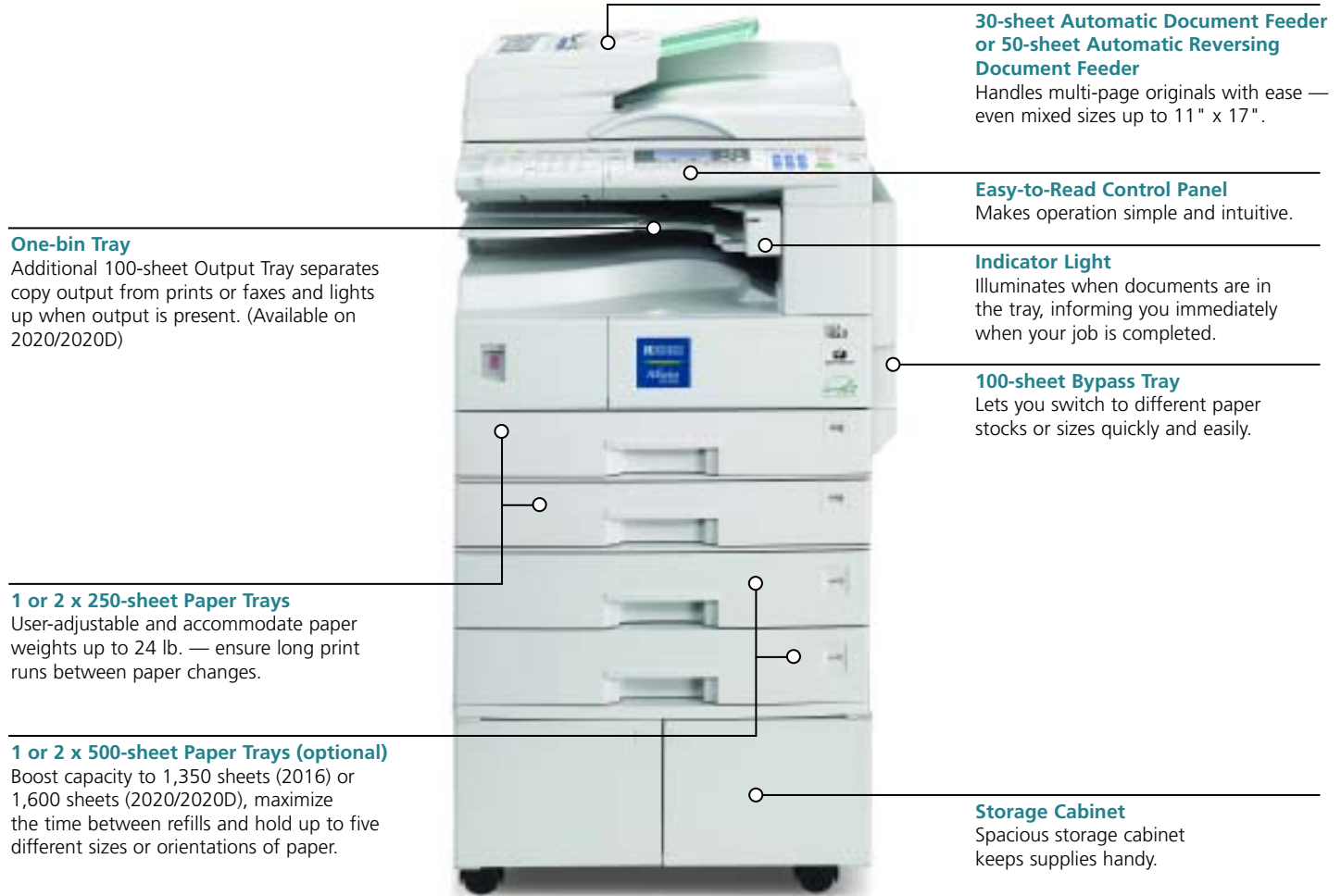
E-mail Address:
Enter E-mail address
abc tom@your-e

reliable



Get Connected, Work Smarter

Enhance productivity with output speeds of 16, 20, and 21 PPM, a first-copy speed of 6.5 seconds, and a wealth of capability-expanding tools.



Select the configuration that meets the needs of your office.



2016spf: For efficient document management in a space-saving design.



2020spf: For productive document management, including a One-Bin Tray.



2020Dspf: For total document management, including a One-Bin Tray and Duplexing capability.

Ricoh 2016/2020/2020D Series

Intelligent and hardworking, the RICOH® 2016/2020/2020D Digital Imaging Systems put greater productivity at your fingertips while improving your bottom line.

In today's evolving business climate, selecting the right technology can be key. With the Ricoh 2016/2020/2020D, you'll gain a fully networked document management solution that will help you work smarter, faster and more economically.

Featuring output speeds of 16, 20, and 21 PPM and a wealth of productivity-enhancing digital capabilities, the Ricoh 2016/2020/2020D simplify your daily information management processes. With just one system, you can scan documents and integrate them into your network...print files and reproduce existing hardcopy documents...send and receive faxes — directly from the system or workstation.

Plus, the 2016/2020/2020D's multifunctional design eliminates the expense of separate standalone systems, while producing print and fax output at copier-level costs.



FastFlexibleIntuitiveUnmatched

The Networked Office Becomes Reality for Your Workgroup

Add greater value to your network investment when you add the Ricoh 2016/2020/2020D to your workgroup environment.

- Connect to your network or directly to a PC using one of two standard interfaces: 10/100BaseT Ethernet or USB 2.0.
- Select one of two Wireless LAN Options and place your Ricoh 2016/2020/2020D digital imaging system at the point of need while eliminating unsightly cables.

Works the Way You Work

The Ricoh 2016/2020/2020D digital imaging systems streamline all aspects of the document workflow — from input, to management, to output and distribution. And the large, intuitive Control Panel makes every job — for every user — an easy one.

Flexible Document Input

With the Ricoh 2016/2020/2020D digital imaging systems, valuable information arrives from a variety of sources...

- Quickly process up to 30, single-sided originals (2016/2020) or up to 50, two-sided originals (2020D) at once for scanning, copying, e-mail transmissions and outbound fax transmissions.
- Send electronic files from the workstation to the 2016/2020/2020D via your network and then print them for immediate use.
- Scan documents — such as photos, 11" x 17", or spreadsheets — using the Network TWAIN Scanning function, directly to an image editing application like Adobe® PhotoShop® or send them to a client utilizing Scan-to-Email, which eliminates the need for multiple desktop scanners.
- Automatically receive incoming faxes — either printed at the 2016/2020/2020D or routed to the desktop via your network.

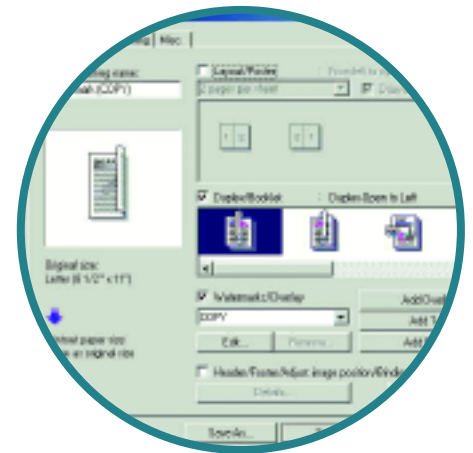
Smart Document Management

However data reaches the Ricoh 2016/2020/2020D digital imaging systems, once there, you'll have an array of software that will help you efficiently organize and manage that data.

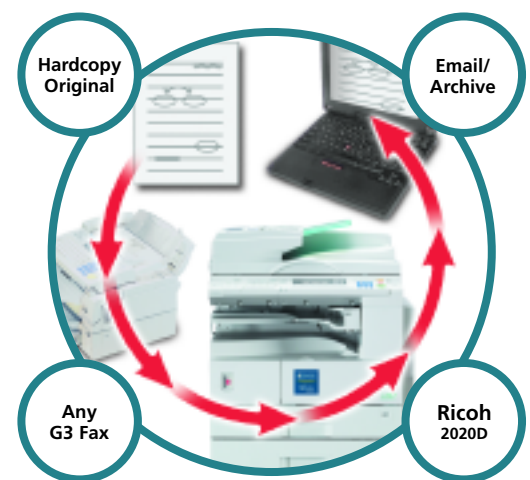
- **ScanRouter Pro** — Ideal for environments with more robust scanning requirements, ScanRouter Pro offers enhancements to ScanRouter Lite and provides Scan-to-Folder/File and OCR capabilities.
- **DeskTopBinder Lite** — Stay at your desk and manage electronic files with DeskTopBinder Lite software. For example, you can use DeskTopBinder Lite to merge Word and Excel files to create a commanding sales report.
- **Web SmartDevice Monitor and Web Image Monitor** — The Ricoh 2016/2020/2020D digital imaging systems include complimentary device management utilities that enable busy IT professionals — and users — to monitor and manage all functions of the 2016/2020/2020D — copy, print, scan and fax — from the workstation. Additionally, users can add e-mail addresses and fax numbers, view system status and configuration, check toner and paper levels, and receive e-mail error notification using a standard Web Browser.



Quickly connect to your PC or the network via standard Ethernet or USB 2.0 interfaces.



Ricoh's Refined Print Command Stream (RPCS™) is an easy-to-use, icon-based print driver that enables you to apply and save special settings, including duplexing, for one-click job processing.



Utilize Inbound Fax Routing of documents directly to a PC to reduce paper costs.

NetworkPrintScanFaxE-mail

Versatile Document Output

Communicating your business message has never been easier. With the Ricoh 2016/2020/2020D digital imaging systems' impressive distribution and output capabilities — from printing professional hardcopy documents to Scan-to-Email to LAN-Fax and Internet Fax.

- **Digital Copying** — Take care of other business while the Ricoh 2016/2020/2020D takes care of all your copying needs.
 - Cruise through long jobs without interruption thanks to a generous paper supply of up to 1,350 Sheets (2016) or 1,600 Sheets (2020/2020D). Plus, a 100-Sheet Bypass Tray further increases output versatility, enabling users to produce jobs on colored stock, transparencies and envelopes.
 - Automatically rotate scanned images to match the orientation of the paper in the paper trays and eliminate costly — and frustrating — output errors.
 - Combine multiple images onto a single page, enabling you to efficiently manage documents that you must keep, but rarely refer to.
 - Produce collated sets from memory with the 2016/2020/2020D's Electronic/Rotate Sorting feature — eliminating time-consuming, manual sorting.
- **Network Printing** — Featuring high-performance network printing capabilities, the 2016/2020/2020D digital imaging systems offer support for all popular network platforms. And our intuitive RPCS™ icon-based print driver, which enables users to apply job settings and then output those jobs via a single mouse click, combines with standard PCL5e/6 and optional Adobe PostScript 3™ to provide easy accessibility for all users.
- **Scan-to-Email** — Scan hardcopy documents and then send them to multiple e-mail addresses as TIFF or PDF files. With scan resolutions up to 600 dpi, it's the perfect way to communicate large, multi-page documents — such as legal briefs or technical manuals — while eliminating costly overnight delivery charges.
- **Outbound Hardcopy Faxing** — Environments with demanding hardcopy fax requirements will appreciate the 2016/2020/2020D's high-end fax functionality. A Super G3 Modem combines with JBIG Compression to transmit faxes in as little as 3 seconds per page. And power through peak fax periods with a wealth of advanced fax capabilities, including Serial Broadcasting, Batch Transmission and Two-sided Transmission (2020D only).
- **LAN-Fax** — Stay at your desk and fax from your workstation using the 2016/2020/2020D LAN-Fax driver. Faxing becomes as easy as clicking "print," which eliminates the need to print documents and then walk to another location to fax them.
- **Internet Fax** — Eliminate long distance and/or international phone charges when you fax for free over the Internet (T.37). Convert outbound faxes to e-mail format and then transmit them to another Internet Fax or PC via the Internet. You'll even receive a return receipt back to your workstation so you'll be sure your transmission was successful.



Your Partner in Environmental Solutions



The Energy Star® compliant 2016/2020/2020D continues the longstanding commitment of Ricoh to developing office solutions with superior energy and supply-saving features, including:

- Quick Start-Up (QSU) Technology
- Power-saving Sleep Modes
- Duplex and Combine Copy Modes
- Toner Recycling
- Low Noise Levels
- Minimal Ozone Emissions
- Restriction of Hazardous Substances (RoHS)

Ricoh 2016/2020/2020D Series Specifications

Engine Specifications

Imaging Process	Dry Process (dual component)
Reading Element	Solid State Scanner
Configuration	Console
Resolution	600 x 600 dpi
Grayscale	256 Gradation Levels
Paper Supply	250-Sheet Tray (2016) 250 Sheets x 2 Trays (2020/2020D)
Bypass	100 Sheets, #10 Envelopes
Paper Weight	16 to 24 lb. Bond (Paper Trays) 16 to 42 lb. Bond (Bypass Tray)
Output Tray Capacity	250 Sheets
Power Source	120V/60Hz/15A
Dimensions (WxDxH)	21.65" x 22.36" x 16.54" (2016) 21.65" x 22.36" x 21.97" (2020) 23.11" x 22.36" x 21.97" (2020D)
Weight	78 lbs. (2016) 96 lbs. (2020) 103 lbs. (2020D)

Copier Specifications

Warm Up Time (Basic/spf)	15 Seconds/30 Seconds
First-Copy Speed	6.5 Seconds
Multi-Copy Speed	16 copies/minute (2016) 20 copies/minute (2020) 21 copies/minute (2020D)
Quantity Indicator	1-99
Original Type	Sheet/Book
Original Size	Up to 11" x 17"
Copy Size	5.5" x 8.5" to 11" x 17"
Reproduction Ratios	50%; 65%; 78%; 93%; 121%; 129%; 155%
Zoom	50% to 200% in 1% increments
Memory Capacity	16 MB

Copier Features

Auto Image Density	Image Rotation
Auto Paper Select	Photo Mode
Auto Reduce/Enlarge	Rotate Sorting*
Auto Start	Scan Once, Print Many
Auto Tray Switching*	Series Copying
Combine Originals (2/4)	User Codes (50)
Electronic Sorting	User Tools
Energy Saver Mode	

*Requires optional Paper Bank on the 2016.

Network Printer Specifications (option)

Print Speed	16 PPM (2016) 20 PPM (2020) 21 PPM (2020D)
Interface	Standard Ethernet 10/100BaseT Standard USB 2.0 Optional IEEE1394 Optional IEEE802.11b Wireless LAN Optional Bluetooth Optional IEEE1284 Parallel
Resolution	600 x 600 dpi
Network Protocol	TCP/IP; IPX/SPX; AppleTalk (Auto switching); NetBEUI*
CPU Speed	240 MHz
Memory Capacity	192 MB shared with copier, scanner and fax
PDL	Standard RPCS, PCL 5e/6 Optional Adobe PostScript 3
Network Operating System	Windows 9x, Me, NT4.0, 2000, 2003, XP, Macintosh 8.6 to OSX 10.1 or later, UNIX

*SmartDeviceMonitor for client is required.

Printer Features

Automatic Tray Selection	Layout
Auto Tray Switching	Paper Size Settings
Envelope Printing	Watermarks

Network Scanner Specifications (option)

Scan Speed	ScanRouter: 43 ipm (@ 200 dpi) TWAIN Driver: 25 ipm (@ 200 dpi)
Interface	Standard Ethernet 10/100BaseT Optional IEEE1394 Optional IEEE802.11b Wireless LAN
Optical Resolution	600 dpi
Compression	Binary: MH (default), MR, MMR
Maximum Original Size	11" x 17"
Network Protocol	TCP/IP
Memory Capacity	192 MB shared with copier, printer and fax
Original Size	Up to 11" x 17"
File Formats	TIFF; PDF

Scanner Features

Black-and-White Scanning	Image Rotation
Duplex Scanning (2020D)	Network TWAIN Scanning
Embedded Scan-to-Email	ScanRouter Lite

Fax Specifications (option)

Circuit	PSTN, PBX
Compatibility	ITU-T G3
Modem Speed	33.6 Kbps V.34 w/Auto Shift Down
Transmission Speed	G3; 3.0 Seconds*, **
Scanning Speed	1.0 Second
Data Compression	MH, MR, MMR, JBIG
Resolution	200 x 100/200/400 dpi
Page Memory	3 MB (240 Sheets*)
Memory Backup	1 Hour
Quick Dials	32
Speed Dials	150
Group Dials	10 (max. 100 per group)

**Based on ITU-Test Chart #1 in standard mode

**Approximately 3 seconds per page at 33.6 Kbps is dependent on optimal line quality. Customer performance may vary by location.

Fax Features

A1 Short Protocol	LAN-Fax***
Authorized Reception	Manual Reception
Auto Reduction	Page Retransmission
Batch Transmission	Parallel Memory Transmission
Battery Backup	Reception Time Printing
Dual Access	Restricted Access
Duplex Fax Transmission (2020D)	Send Later
Error Correction Mode	Serial Broadcasting
Inbound Fax Routing***	Substitute Reception
Inbound Fax (T.37)***	User Function Keys (3)

***Requires optional all-in-one kit

Accessories

DF78 Automatic Document Feeder	
Original Size	5.5" x 8.5" to 11" x 17"
Original Weight	14 to 28 lb. Bond
Original Capacity	30 Sheets
Dimensions (WxDxH)	21.6" x 18.5" x 3.55"
Weight	15.4 lbs.
DF79 Automatic Reversing Document Feeder (2020D)	
Original Size	5.5" x 8.5" to 11" x 17"
Original Weight	Simplex Original: 10 to 34 lb. Bond; Duplex Original: 14 to 28 lb. Bond
Original Capacity	50 Sheets
Dimensions (WxDxH)	21.6" x 18.5" x 5.1"
Weight	22.1 lbs.
PS450 Paper Bank*	
Paper Capacity	500 Sheets x 2 Trays
Paper Size	5.5" x 8.5" to 11" x 17"
Paper Weight	16 to 28 lb. Bond
Dimensions (WxDxH)	21.6" x 20.5" x 10.6"
Weight	55.1 lbs.
PS460 Paper Bank*	
Paper Capacity	500 Sheets x 1 Tray
Paper Size	5.5" x 8.5" to 11" x 17"
Paper Weight	16 to 28 lb. Bond
Dimensions (WxDxH)	21.6" x 20.5" x 5.3"
Weight	26.1 lbs.
Type PT340 One-Bin Tray	
Paper Size	5.5" x 8.5" to 11" x 17"
Paper Weight	16 to 28 lb. Bond
Paper Capacity	100 Sheets
Dimensions (WxDxH)	Unit: 8.5" x 18.9" x 4.1" Tray: 13.2" x 15.4" x 1.7"
Weight	3.5 lbs.

*Cabinets Available



RICOH

Ricoh Corporation, Five Dedrick Place, West Caldwell, NJ 07066
Ricoh is a registered trademark of Ricoh Corporation. Windows and Windows 95/98/Me/NT4.0/2000/XP are registered trademarks of Microsoft Corporation. Macintosh, Mac OS and AppleTalk are registered trademarks of Apple Computer, Inc. Adobe and PostScript are registered trademarks of Adobe Systems, Inc. PCL is a registered trademark of Hewlett-Packard Company. RPCS™ is a trademark of Ricoh Company, Ltd. All other trademarks are the property of their respective owners. Printed in U.S.A. on recycled paper. Print speed may be affected by network, application or PC performance. Specifications and external appearances are subject to change without notice. Products are shown with optional features.

Printed in U.S.A. on recycled paper because Ricoh cares.



CA-0495